

Farmstead Times

from the Rhode Island Farm Bureau

2024 RIFB Annual Meeting Returns to Crystal Lake Golf Club

**Please join us on Thursday, November 7 to celebrate
71 years of Farm Bureau in Rhode Island!**

The 2024 Annual Meeting has been **moved up two weeks this year to the FIRST Thursday in November**. Our Annual Meeting returns once again to Crystal Lake Golf Club in Mapleville, RI. Registration opens at 10:00 am, and workshops begin at 10:30 am with events continuing throughout the day. Our Business Meeting begins at 4:00 pm, Social Hour at 5:30 pm and the Dinner Buffet at 6:30 pm. **This year, registration will be \$35.00 per person for ALL attendees.**

To register find the link on our website, RIFB.org, or stop by or call the RIFB office at 401-385-3339. Space is limited, so register early!

Isabella Chism, chair, American Farm Bureau Women's Leadership Committee, will be our evening's speaker. Chism serves on the AFBF board of directors as well as the AFBF trade advisory committee. She and her husband, Kent, farm in Howard County, IN, raising corn, soybeans and sweet corn.

The day begins with a 10:30 a.m. workshop featuring **Ananda Fraser, RI DEM Produce Safety Program Coordinator**. Ananda will lead the workshop: **Update to the Produce Safety Water Rule: RIDEM's approach**. RIDEM's goal is to work with larger growers that will need to understand the changes for the 2025 growing season, and work through the smaller growers in a tiered approach. Lunch is once again sponsored by Blackbird Farm, featuring Chef Andy Teixeira of Newport Vineyards. Chef Andy's demos have been a hit each year, and we love to see him return. **Austin Large, AFBF Senior Director, Membership & Organization Development, will speak on membership in the afternoon.** Austin is the AFBF Small State Coordinator. We are in the process of finalizing a third workshop, so please check out our website at RIFB.org to get updates on the Annual Meeting and find the link to register.

Policy Items: Please submit any 2025 policy recommendations in writing to the RI Farm Bureau. Please mail or hand deliver policy recommendations to: 16B Nooseneck Hill Road, West Greenwich, RI 02817 or email the scanned document to director@rifb.org. Submissions must be received in the office by 4:30 pm on Thursday, October 17, 2024. Policy submissions will be reviewed by the Resolutions Committee for inclusion in Policy Items to be voted on at the November 7, 2024, meeting.

(cont. pg 2)



Volume 25, Issue 4

Fall 2024

Board of Directors

Henry B. Wright III, President
Kevin Breene, Vice President
Susanna Camacho, Treasurer
Tim Gallagher, Secretary
Ann Marie Bouthillette
Brenda Frederickson
Peter Gavitt
Donald Hopkins
Rob LaPlume
Edwin "Scooter" LaPrise
Chandler Neale
Jim Pagliarini
Joe Polseno
Rob Swanson

Staff

Heidi Quinn,
Executive Director
Maggie Cole,
Administrative Assistant &
Young Ag Chair

Inside this issue:

2024 Annual Meeting	2
Washington County Fair Showmen	3
2024 RIFB Scholarhsip	7
President's Corner	10
Focus on Agriculture	11

(cont.) **We always welcome raffle donations for the meeting.** Each year we have a beautiful array of farm products, gift baskets from members & local businesses, handmade crafts, gift cards and more for our raffle. All proceeds go to our Scholarship Fund. In addition, **our RI Farm Products Raffle tickets are still available in the office and will be available for purchase at the meeting before we draw the three prize winners that evening!** If you are not attending the meeting, please remember you can stop by the office or call to purchase tickets! Prizes are \$500- \$300- \$200 in member farms' gift certificates! \$5/ticket or 5 for \$20. Don't miss out on this great raffle opportunity!

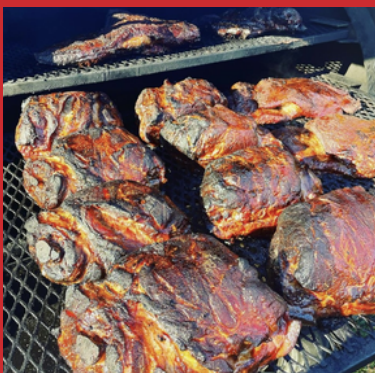
Membership Renewal Time?

Remember to renew your RI Farm Bureau membership on time to maintain your member benefits and your American National/Farm Family Insurance discount (if that applies to you). Dues notices are no longer only sent in November, but are sent just ahead of the “anniversary” month you joined. Feel free to call the office at 401-385-3339 if you believe you have not received your renewal notice.

Your dues help RIFB promote and protect farming in Rhode Island through our support to members just starting a farm through those with decades of experience; through outreach at events; by collaborating at the national level with American Farm Bureau; and by lobbying at both the state and national level for the right to farm, water rights and property rights.

Not a farmer? *We still* need your support. Our **Friend of Farmer** members are *very important to us*. As consumers, and often true friends of the farmers you support, your memberships help us continue our work to keep agriculture in Rhode Island.

Thank you to everyone who supported the
2024 YAP BBQ!



South County BBQ catered this year's Young AG Professionals fundraiser. We had roughly 100 people in attendance and all the proceeds went toward the awards given out at the Washington County Fair.

We are so appreciative of everyone who came out to support the fundraiser and those who donated towards the raffle. We look forward to seeing everyone at next year's BBQ.

2024 Grand Champion Showmen



Left-Right: Brenda Wildes (Judge), Chase Beattie, Devon Cranston, Cora Cranston, Gabrielle Parker, Kylie Jordan, Kaylin Couto, Madeline Dutra

Congratulations to this year's Grand Champion Showmen!

Each year Rhode Island Young Ag Professionals sponsor various awards to Rhode Island Youth Livestock Exhibitors at the Washington County Fair. This year eight youth were presented with awards for winning Grand Champion Showman within their species.

- Chase Beattie: Grand Champion Swine Showman
- Devon Cranston: Poultry Grand Champion Showman
- Cora Cranston: Grand Champion Sheep Showman
- Gabrielle Parker: Grand Champion Goat Showman
- Kylie Jordan: Grand Champion Dairy Showman
- Kaylin Couto: Grand Champion Beef Showman
- Madeline Dutra: Rabbit Grand Champion Showman
- Isaac Riendeau: Grand Champion Working Steer Showman



RIFB Executive Director Heidi Quinn presents Kaylin Couto with a Husky showbox for Premier Animal 2024.



Cora Cranston was one of eight awarded a Custom Igloo cooler for Grand Champion Showman. Cora is shown here with her Southdown sheep.

— THE #1 AG INSURER IN THE STATE OF RHODE ISLAND* —



LET'S TALK ABOUT THE STATE OF YOUR INSURANCE

When you dedicate your life and well-being into a farm, you deserve more than just a one-size-fits-all insurance plan to protect it.

At American National, our Special Farm Package 10[®] or Country Estate policy can provide you with a flexible package that can be tailored to meet your specific needs, with coverage options that include windstorm, fire, mechanical equipment and utility line failures, machinery, livestock and more. Plus, our coverage options extend beyond farm and ranch needs to life insurance as well.

Having a strong relationship with the Rhode Island Farm Bureau over the years has given American National the understanding of what truly matters most to farmers across the state.

Find a local agent at an.insure/rifb



American National is a group of companies writing a broad array of insurance products and services. Products and services may not be available in all states. Terms, conditions and eligibility requirements will apply. Life insurance and annuity products may be underwritten by American National Insurance Company, Galveston, Texas. Property and casualty products and services may be underwritten by Farm Family Casualty Insurance Company, Glenmont, New York.

*2022 SNL Market Share Data

21.188.25.410890.0424

AGRICULTURAL SAFETY – FARM MACHINE HAZARDS

Agriculture is one of the most dangerous occupations in the United States. Every day, it is estimated that 243 farmers or agriculture workers suffer an injury related to their work, with up to five percent of those injuries being permanent. Farm equipment poses one of the biggest risks, and while some farm machinery-related injuries occur because of machine malfunctions, others are often the result of human error. By recognizing certain hazard points when working with machinery, and exercising caution at these points, many accidents can be avoided.

Hazard Points

1. Pinch points come about when two objects move together and at least one of the objects moves in a circle.
2. Pull-in accidents occur when someone is using their hands to unclog a machine or feed a substance into the operating machine.
3. Wrap points are found wherever there is an unprotected, rotating shaft.
4. Shear points involve a scissor-like motion that occurs when two components move closely enough to each other to cut a soft material. Cutting points are the same motion, except with only one component moving at a rapid, forceful rate.
5. Objects can be propelled a great distance by farm equipment.
6. On many farm implements, free-wheeling parts can continue to rotate for up to two minutes after the power is turned off.
7. Crush points occur when an object moves toward a stationary object or two objects move toward each other.
8. Springs can expand or recoil with great force when released.
9. Burn points are found under extreme temperature conditions.
10. Hydraulic systems contain tremendous amounts of pressure that should be relieved before working with any part of the system.

Develop good safety habits when working with heavy machinery.

Precautions

- Never reach into any part of an operating machine.
- Disengage the power to the implement, turn off the tractor engine, take out the key and wait until all parts of the machine have stopped moving before you begin to do anything with the equipment.
- Keep all guards and shields in good condition and properly attached to the equipment.
- When backing a tractor into position to attach to an implement, the assistant should always stand clear until the tractor is in the proper position.
- Any onlookers around machinery should stand back at a safe distance to avoid being struck by thrown objects.
- Read warning labels on all farm machinery.
- Familiarize yourself with operating manuals before running the machine.

THINK before you act. Be aware of the danger of your farm equipment.





DISCOVER AN ENTIRE ORGANIZATION WORKING FOR YOUR SUCCESS.



Nobody serves your ag credit needs like Farm Credit East.

Farm Credit East was made in agriculture. It's all we do. So every product, every service and every person is dedicated to meeting your financial needs and growing your success. We know agriculture, we understand your business needs, and work to achieve your goals.

Discover the difference at Farm Credit East.

farmcrediteast.com

800.562.2235

- Loans & Leases
- Financial Record-Keeping
- Payroll Services
- Profitability Consulting
- Tax Preparation & Planning
- Appraisals
- Estate Planning
- Beginning Farmer Programs
- Crop Insurance



2024 RIFB Scholarship

Our 2024 Scholarship Application is due by September 23.

Scholarship funding is awarded primarily on merit and your interest in advancing agriculture.

Applicants should be enrolled in Fall Semester classes with an intended major in an agriculture/veterinary related major in a 2 or 4 year program at an institute of higher education for the Fall of 2024.

Successful applicants will be announced at the Rhode Island Farm Bureau Annual Meeting on November 7, 2024.

Both the 2024 RIFB Scholarship Application (to be printed and filled out), and the requirements for application, can be found on our website at RIFB.org.

We're there to keep you doing your job.

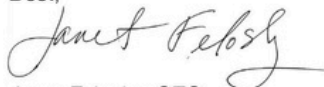
As a three-generation family-run business, I know first hand what it takes to keep a business going. When my father started Monroe Tractor in 1951, his philosophy was "if you take care of the customer, the business will grow" or as he often said, "where courtesy dwells, service excels." His words are still the foundation of how we do business today.

Every Monroe associate understands that when we help a customer with their equipment, we're also helping them do their jobs, earn a living and raise a family.

We are committed to providing the right product selection, quality service and support, and understanding the real needs of our customers to ensure that you're always up and running.

We are proud to be a part of the RI Farm Bureau and excited to bring the CASE brand back to New England and recently, CASE IH. Reach out to Mike Reagan with any of your equipment needs!

Best,



Janet Felosky, CEO



Mike Reagan – RI Equipment Sales

401-332-8062

The Rhode Island Farm Bureau booth set up at 2024 Washington County Fair. Thank you to all our volunteers who helped make it possible.



Your ad could be here for just \$75/issue!



Contact Heidi or Maggie at the RIFB Office to learn more about advertising opportunities in the quarterly newsletter. **401-385-3339**

Ashley Johnson

Agent



780 Victory HWY Unit 1
West Greenwich, RI 02817

401.397.1050
Ashley.Johnson@American-National.com

LAST Print Newsletter

This will be RIFB's last print newsletter. From now on the quarterly newsletter will be posted on our website and emailed to our members.

If you wish to have a copy mailed to you, please call the office at **401-385-3339**

Need to update your email? Email us at **rifarm@rifb.org** to update your email to stay current.

The 2024 Rhode Island Farm Scavenger Hunt is in full swing! Don't forget to mail in your completed maps when you finish.

As the 2024 growing season comes to an end remember that the RI Farm Scavenger Hunt should be mailed to the office in early January. There is a limit of one entry per person and two entries per household.

Questions?

Call Heidi or Maggie at the RI Farm Bureau:
401-385-3339 or email rifarm@rifb.org.



BENEFITS OF MEMBERSHIP

Don't forget your membership benefits! You can easily save the cost of your dues by taking advantage of these discounts. Go to rifb.org for more info on:

- American National Insurance
- Avis
- Budget
- Case IH
- Caterpillar
- Choice Hotels
- Dungarees.com
- Ford
- Grainger
- John Deere
- Propane Plus
- Wyndham Hotels

Your **Access Card** offers discounts at over **300,000** companies throughout the United States, including: **Disney World Tickets**
Cruise Lines

Need to apply for or renew your pesticide license?

All pesticide exams are available online at this time except private applicator exams. Private Pesticide License exams are given in person by the Rhode Island Department of Agriculture. Exams are given by registration only and under RIDOH guidelines. Please contact Harold Puckett or Kimberly Lavoie to schedule a private license exam.

Commercial licensing exams are available online. The study material for the core exam is available for download on the RI DEM Pesticide Safety and IPM Training page. The category manuals are available for purchase online through the Cornell bookstore.

For more information please contact
Harold.Puckett@dem.ri.gov or
Kimberly.Lavoie@dem.ri.gov.

If you do not have Internet access, you may contact:
Harold Puckett at DEM Ag 401-537-4284,
Howard Cook at DEM Ag 401-537-4271, or
Kimberly Lavoie at DEM Ag 401-537-4280.

President's Corner

Elections Have Consequences

If Trump is reelected, rules and regulations will probably lesson. Interest rates will come down, allowing expansion of business. Wide scale markets will open up. Discretionary funds will come back to people.

We also need to prepare for a Democratic win. If some of Harris's policies are put in place, what do we do? It may be time to make lemonade out of lemons. We will probably see food shortages and sky-rocketing inflation, the silver lining being that maybe local production of food will be more important. Opportunities of the direct market may expand. At the same time, it may prove to be very difficult to get inputs; fertilizer will be expensive and hard to get. Expect greater regulatory control, and the loss of pesticide control tools.

The bottom line is it won't be the status quo no matter who is elected. You would be wise to prepare for either scenario. Using Yankee ingenuity, money can be made in either administration. In the Northeast, we are not tied to any market, like the South is to the poultry industry. We are tied to the consumer in this densely populated region.

As always, Rhode Island Farm Bureau needs your help. We need membership so we are able to navigate the legislative pitfalls that continue to create a headwind to our success. Remember, there is power in numbers. We are the most powerful voice of agriculture in RI, and we can only stay that way through membership, with our members helping us push a positive agricultural agenda over the hurdles with beneficial legislation for Rhode Island Farmers.

Goals for 2025

- To continue to support oyster farmers who face the difficulty of offshore wind transmission lines coming through their farms.
- To help the Farm Bill pass. We need to work towards a fair and balanced Farm Bill in 2025. This Farm Bill will be particularly important for specialty crops because of the expansion of crop insurance to cover a wider range of specialty crops. Our two Congressional representatives will be important regardless of the administration in charge, as the congressional balance will likely be neutral.
- To continue working with RI 's wood operators and tree farmers as they strive to negotiate with DEM to enhance the forestry industry in Rhode Island.
- To explore the opportunities of the dairy industry, particularly small-scale pasteurization plants and niche market dairy products.

As with all farmers that are optimistic for the coming crop year, it can't be all bad. As we optimistically look forward to 2025, let's put a smile on. Happy farming!

Henry B. Wright III, President RIFB



Farm Bureau's Policy Development: From the Grassroots Up

By Zippy Duvall, President, American Farm Bureau Federation



August is here, which means for Farm Bureau, our policy development process is heading into full swing. As a grassroots organization, this is the time when our members speak up on challenges they are facing on the farm and within their communities. Those concerns become policy resolutions, which work their way up through the county, state and, ultimately, the national level.

Every policy resolution brought to the floor at the delegate session of the American Farm Bureau Convention in January started with one farmer speaking up.

Farm Bureau stands as the Voice of Agriculture, thanks to this active participation by our members. From the farm bill and ag labor reform to infrastructure and rural broadband, your American Farm Bureau team is working diligently on a wide array of issues here in Washington. We rely on you to guide our policy because you know better than anyone what works, and what doesn't, on your farm. That is also why our nation's leaders and elected officials know that when Farm Bureau speaks, we are speaking for farmers and ranchers.

Occasionally, there are new or emerging issues that impact farmers and ranchers, but we don't have specific policy to guide our work. This is when our team in Washington asks for direction directly from our grassroots members via the policymaking process. With many critical tax benefits for farm and ranch families set to expire in 2025, we are asking members to ensure we have clear policy in light of the potential for severe economic consequences. We have a second ask of you and it's important. We need farmers and ranchers across the country to meet with lawmakers this year, so they act swiftly to implement the tax reform farmers and ranchers need in 2025.

Tax reform is crucial for ensuring the economic sustainability of our farms and ranches. Lower tax rates, small business deductions and higher estate tax exemptions help our farm families manage finances more effectively, provide opportunities for investment and even help ease the difficult planning for succession. That is also why we have our eyes fixed on this quickly approaching deadline that will place many of these critical benefits at risk. Without renewal of these benefits, farmers are facing a steep tax increase, and potentially tough decisions going forward. Our farm and ranch families need a permanent tax code that provides stability and recognizes the unique financial challenges farm businesses face as they work to provide a secure food supply for our nation.

At Farm Bureau, the call for tax reform has come in many forms over the years and we are continuing to work with, and on behalf of our members, to get a solution before the 2025 deadline. That is also why addressing the tax concerns through the policy development process is a top priority. We want to hear from our members about how these issues are impacting your farms and ranches directly. This feedback not only helps us work on your behalf but also gives us farmer and rancher stories - powerful testimonials - we can share to ensure all lawmakers understand the impact of tax reform on farm and ranch families across the country.

This is your Farm Bureau, and these are your policies. Together, we will continue to shape the future of American agriculture and ensure that our farms, ranches and rural communities thrive for generations to come. I am deeply grateful for the hard work and dedication you put into shaping our great organization at the local, state and national levels and am eager to see what comes from this year's policy development process.

RI Farm Bureau

16 B Nooseneck Hill Rd
West Greenwich, RI 02817

Phone: 401-385-3339

Fax: 401-385-3394

E-mail: rifarm@rifb.org

Web: www.rifb.org



Thank a farmer 3 times a day!

CALLING ALL FFA AND 4-H MEMBERS!



JOIN RI FARM BUREAU FOR FREE

Just a reminder that all 4-H and FFA Members can join RI Farm Bureau for free, and receive all the benefits our other members receive including discounts at thousands of businesses nationwide.

Our 4-H and FFA Members are the future of agriculture and we encourage you to join, either online at RIFB.org, or by calling the office at 401-385-3339.

